

SILVER CLOUD



DESIGNED TO BE DIFFERENT

HISTORY OF SILVER CLOUD



A once in a lifetime yacht, the SWATH design is the fruition of one owner's dream for unmatched comfort while cruising. Every brochure should have a beginning and this story begins with the owner's previous yachts: A 51 foot Rybovich sport fishing yacht to his next endeavor, a 115 foot Burger followed by a 143 foot Feadship. While any ordinary tale should end with the Feadship, in truth, the SWATH design is where this story truly begins...

Silver Cloud has exceptional seakeeping abilities and offers continuous smooth service in rough seas. Designed with maximum stability in mind, most of its displacement is permanently below the surface and the vessel is therefore very significantly less affected by waves. No other build has claim to these bragging rights.



Bigger is not always better. With an expedition pedigree, this 134 foot unique lineage Abeking & Rasmussen design is poetry without motion.



The main deck salon suggests a choice of multiple conversation areas from the L shaped settee with soft pastel cushions to the round breakfast table, along with four deep, soft blue chairs and leather ottoman which are strategically placed in front of the piano. This locale offers a soothing ambiance for any occasion, whether the gathering is formal or informal, large or intimate. Just to port of the seating sections is the dining table which comfortably seats 10 guests and where fine china and wine goblets are the norm, regardless of sea conditions.





The sweeping master stateroom is situated forward on the upper deck and is a vision of serenity. Taking full advantage of the 58 foot beam, this spectacular suite is the ultimate in guest accommodations. Panoramic windows provide a 180-degree view, while a private balcony, complete with owner's helm station, looks down on the foredeck. The master includes a king sized bed on a raised platform, his and hers facilities with heated floor (a bathtub and shower in her bathroom, a shower and separate study for him) as well as private access to a gym. When standing out on the master balcony while underway, with the bow recess at center line, one almost gets the feeling of hovering over the water, like you are riding on a cloud.





Silver Cloud offers a further four opulent staterooms located on the desirable main deck; two with a king sized bed, and two guest rooms each with one twin bed, one full bed and one Pullman. Not only does each stateroom have its own private ensuite bathroom with heated floors, guests also have access to two pantries located on the main and upper deck.





The spacious and understated sky lounge contains a 65 inch 3D LED monitor which deploys from the ceiling and four oversized power reclining chairs. Whether your pleasure is an afternoon nap or exciting video, all your stresses will be washed away by the tranquil environment that encompasses all your senses, as you are onboard one of the most stable designs in the industry.

Just aft of the sky lounge and under the cover of the heli pad, is an alfresco dining area featuring an oval dining table with more than enough room for 10 guests.

World Superyacht Award 2010
 "Winner" – Voyagers' Award
 "Silver Cloud" (The award was for our 19 month [almost around the world] odyssey with owners aboard.)

World Superyacht Award 2009
 "Winner" – Technology Award
 "Abeking & Rasmussen" (The award was for the unique technology developed by A&R for Silver Cloud.)





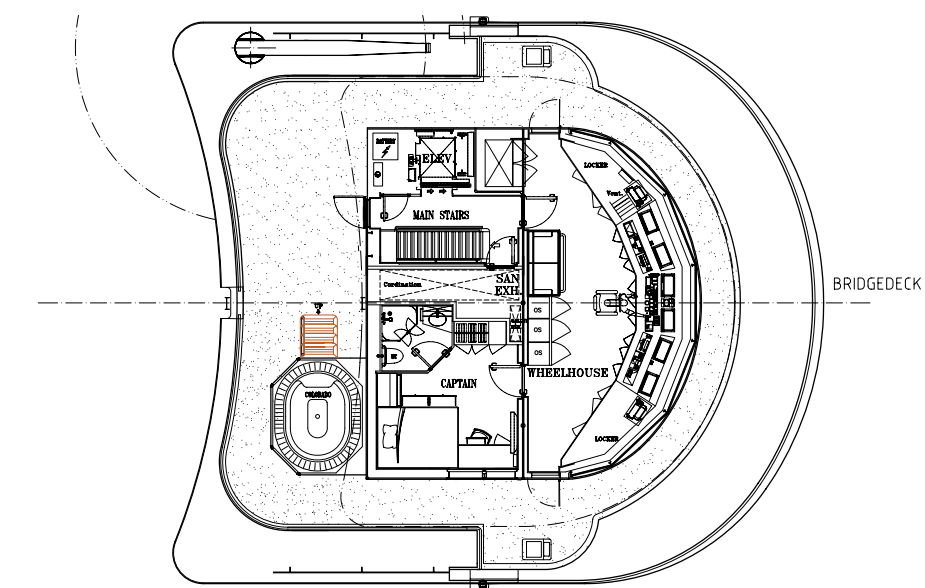
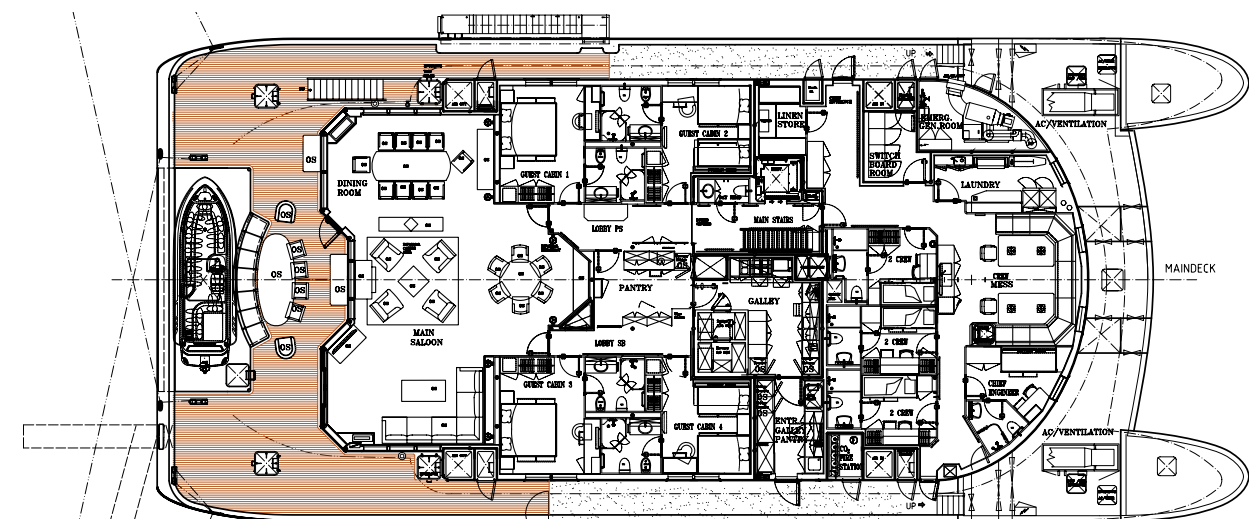
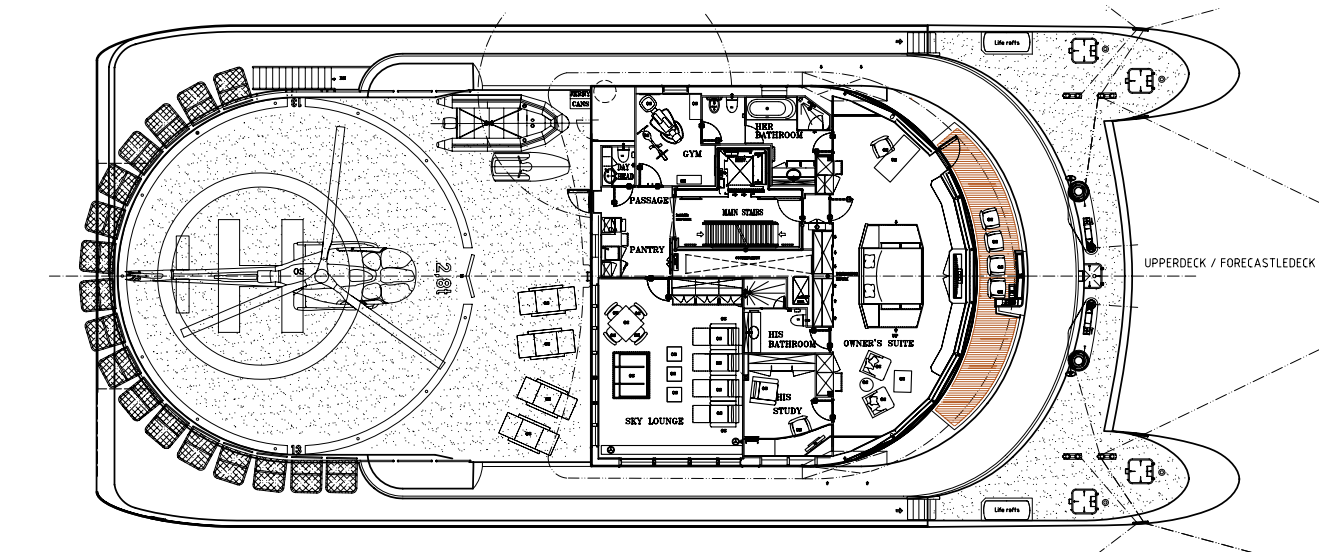
Silver Cloud does not lack for luxury or ease with an elevator that services all three decks. A great vantage point for sightseeing while relaxing is from the Jacuzzi on the bridge deck which is elevated almost 36 feet above the water.

A hydraulic boarding ladder on the port side offers guests easy on and off boarding. The boarding ladder also doubles as a swim platform.

Contentment is king onboard Silver Cloud. Like a floating oasis of its own, this yacht has stayed true to her promise of comfort and stability, regardless of the size of the swell.



All photos were taken while the vessel was on its maiden world voyage.



41M SWATH SPECIFICATIONS

- LOA:** 41m (134'6")
- BEAM:** 17.8m (58'4")
- DRAFT:** 4.1m (13'5") Cruise, 3.5m (11'5") Harbor minimum
- BUILDER/YEAR:** Abeking & Rasmussen / 2008
- ENGINES:** 2 x Caterpillar C32 820kW (1100 bhp)
- SPEED (MAX / CRUISE):** 15 / 12.5 knots
- RANGE:** 3,500 nm / 10 knots
- FUEL CAPACITY:** 85,000 litres / 22,000 gal
- BOWTHRUSTER:** 110kW
- STABILIZERS:** Maritime Dynamics International/Abeking & Rasmussen
- GENERATORS:** 2 x Cat C9 160kW (220V 50Hz), 1 x Cat C4.4 60kW
- FRESHWATER CAPACITY:** 68,000 litres / 18,000 gal (2 x water makers)
- GUESTS:** 10/12 in 5 staterooms
- CREW:** 9
- TENDERS:** 11.9m (39') Intrepid with 3 x 275hp 4 stroke Mercury Outboard,
7m (23') Novurania custom line with Volvo 190hp diesel,
4.5m (14'8") rescue boat
- CONSTRUCTION:** Steel hulls/aluminum alloy superstructure
- CLASSIFICATION:** Germanischer Lloyd 100 A5, MCA, 600t
- NAVAL ARCHITECT / EXTERIOR STYLING:** Abeking & Rasmussen
- INTERIOR DESIGN:** Susan Schuyler Smith of Spectrum Interior Design
- INTERIOR LAYOUT:** Kirschstein Designs LTD
- FLAG:** Cayman Islands



SWATH stands for 'Small Waterplane Area Twin Hull', an innovative concept for smooth service in rough seas. The buoyancy of a SWATH ship is provided by two submarine hulls connected to the upper platform by twin narrow struts from each of the submarine hulls. The cross-sectional area at the sea surface is approximately 1/6th that of a comparable size yacht and thus only a minimum part of the ship is exposed to the lifting forces of the waves while 5/6 of the buoyancy is on the submarine hulls. Additional stability is provided by the SWATH's broad beam, which is twice that of a comparable yacht, and by four large stabilizers controlled by a sophisticated computer system.

Photo Credits: Alex Dreyfoos, Shaw McCutcheon, Buggy Gedleck, Anthony W. Benn, Jonathan N. Crawford and Jan T. Meyer. Designed & Produced by Camper & Nicholson's International. The contents and photographic materials contained in this brochure cannot be reproduced or used in any form of media without the written permission of the publisher and copyright holder. All rights reserved. © 2010

SILVER CLOUD

